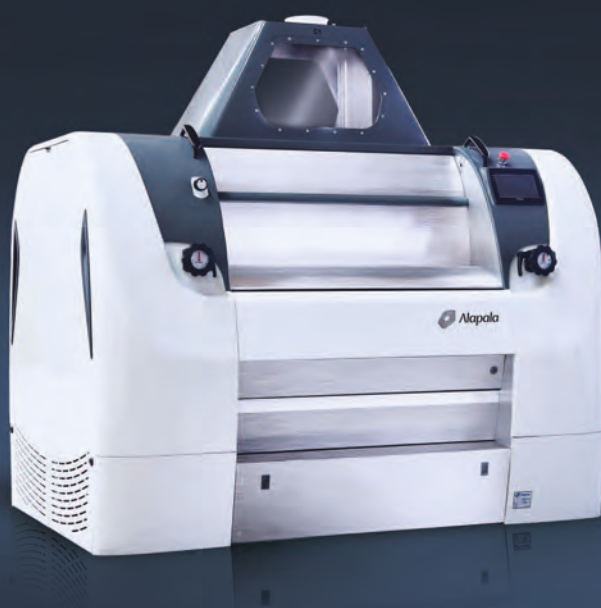


the new generation
SIMILAGO II



a perfect
evolution of
technology

Similago II

New Ideas – New Thinking – New Generation



REVOLUTION IN MILLING TECHNOLOGY GOES ON...



Stainless steel contact parts

The new SIMILAGO II is the result of ALAPALA's 60 years of experience in the technology and engineering of roller mills and the complete range of milling machinery. The SIMILAGO II is designed for high, continuous and consistent grinding of cereals such as wheat, maize (corn), rye, spelt, barley and sorghum. A uniform feed rate across the grinding rolls ensures a consistent grind.

Structurally, the SIMILAGO II has a sturdy frame which is a desk type, precision machined by using the most modern CNC machines. The steel used is a special quality high carbon steel. The bearings and the grinding rolls are directly mounted on to the frame.

This sturdy construction gives the SIMILAGO II the ability to perform high capacity grinding with continuous operation without effecting its performance and reliability day in and day out .

The internal product contact parts are made from stainless steel which also stop the adhering and accumulation of the product and condensation.

The SIMILAGO II is silent in running due to the special profiled transmission belt, drive pulleys and tensioning pulleys which differentially drive the rolls. No greasing is required which provides a clean environment.

Roll temperature is kept low by the air circulation provided by the aero dynamic design of chamber structure.



Easy and fast change of the rolls can be performed in 20 minutes, which is a significant reduction in down times. No special tools are required as the standard tools can be used. No lifting devices for the roll sets are required as they can be dismantled directly from the machine onto a cart.

The grinding rolls are mounted on self-aligning double row roller bearings which are housed in 25 mm thickness housing.

For inspection purposes, double walled inspection door (Alapala design) which can be opened and closed easily due to a weight system avoiding the use of latches. This enables the doors to be dismantled / mounted to from the machine without the use of fasteners.

The universal frame of the SIMILAGO II allows the use of grinding rolls with either a diameter of 250 mm or 300 mm.

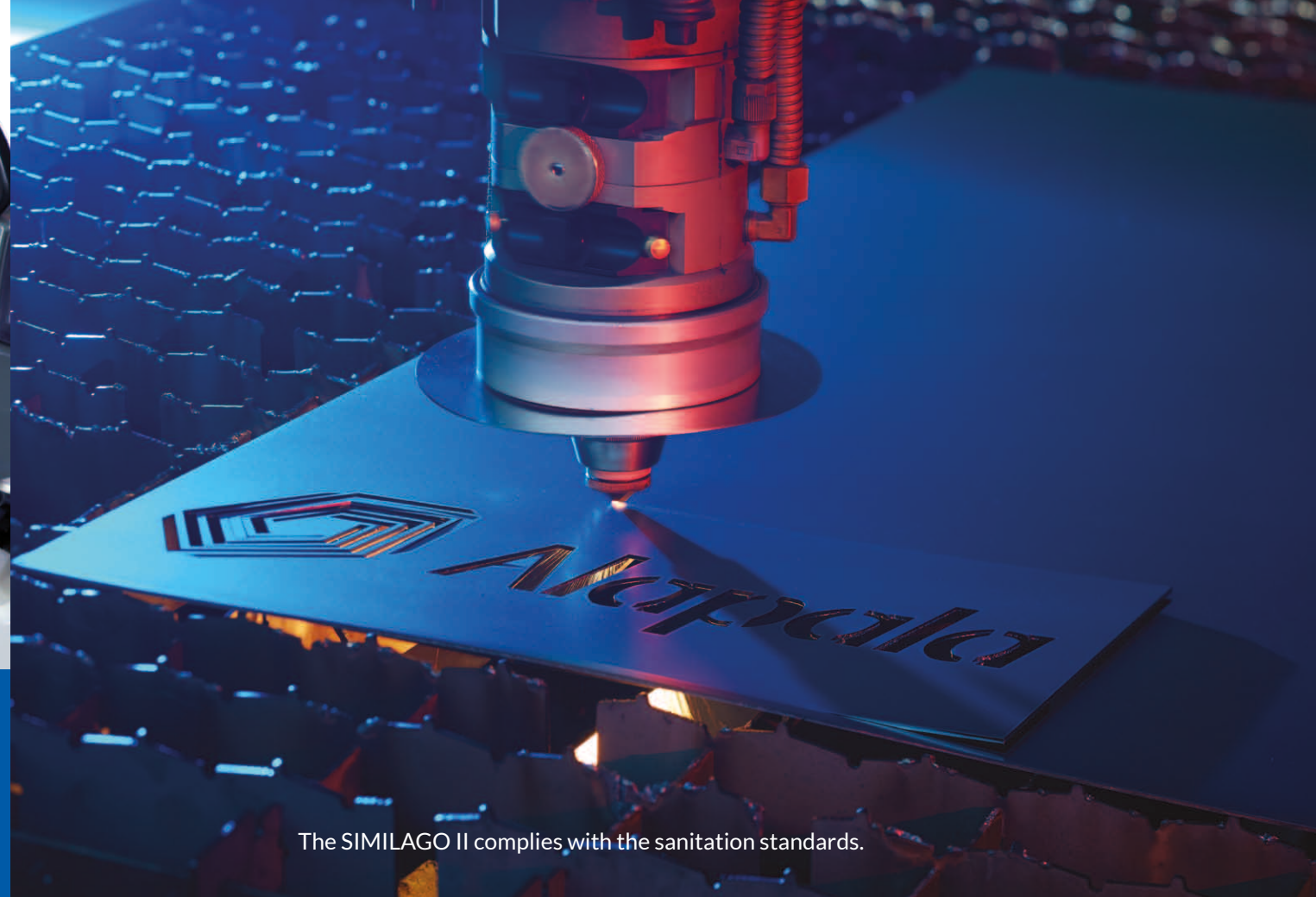
20* MINUTES CHANGE SO MANY THINGS



*The disassembling of a roller set and the assembling of a new roller set are performed in 20 minutes, so the downtime of the milling section is minimized with Similago II.

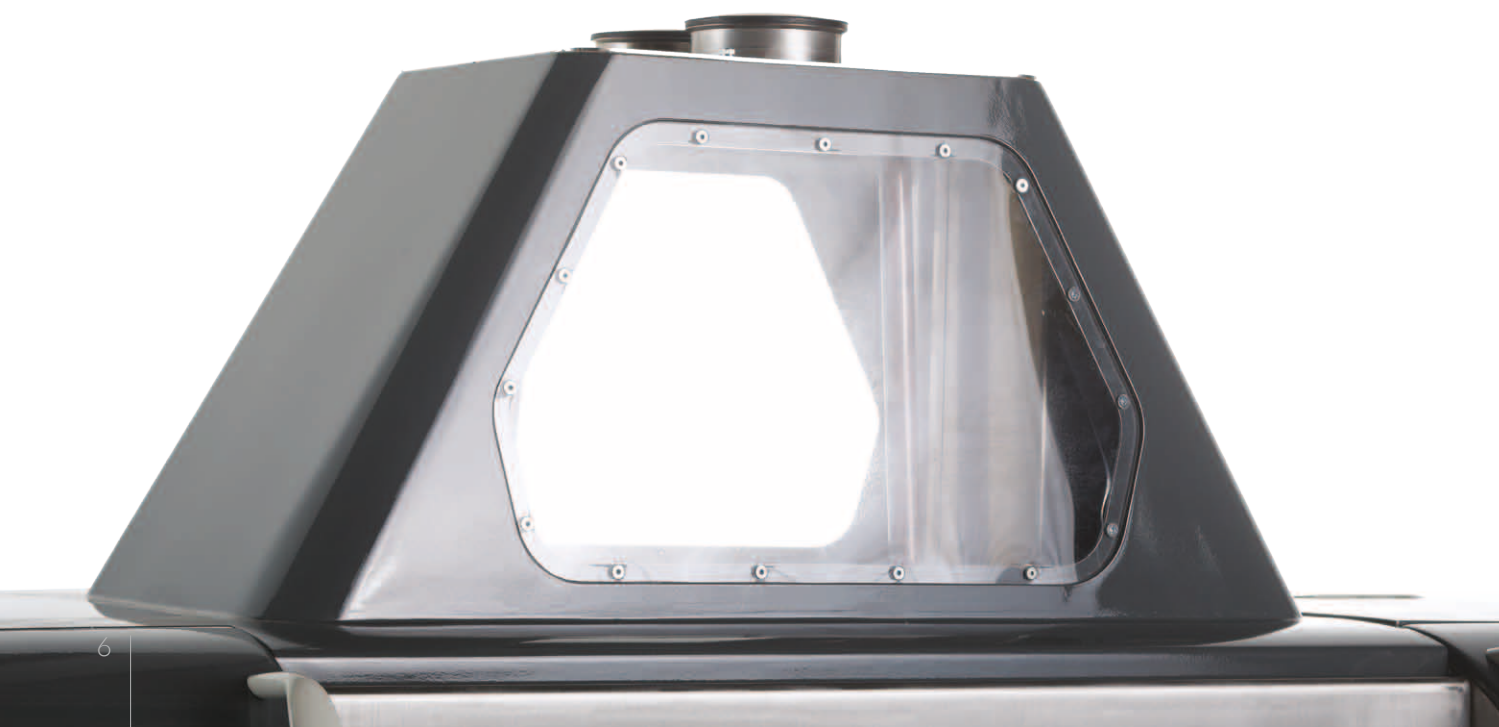


The feed roll speed is controlled automatically by the capacitance sensor in the feed box which sends a signal to feed roll drive motor inverter via a PLC according to the product level in the feed box. No calibration is required. This ensures a perfect and uniform product feed to the grinding rolls.



The SIMILAGO II complies with the sanitation standards.

The polycarbonate inspection glass on the feed box can be easily removed from the outside without the need to dismantle the feed spouts and related parts, for cleaning.



Opportunity for maximum cleaning and hygiene in a few minutes by setting lower chamber of feeding system rollers to fully open position with only a single operation.





new generation

A user friendly touch screen operator interface panel between the operator and microprocessor which is mounted on both sides allows the continuous and changing and monitoring of all the operating parameters together with alarms and graphical system visualisation. This allows easy speed changes, product level in the hopper, motor power consumption, alarm e.t.c.

The system comes with a built in RS 485 interface for communication. An optional Profibus module can be installed for net working with the main mill PLC. For safety an emergency stop buttons are installed.

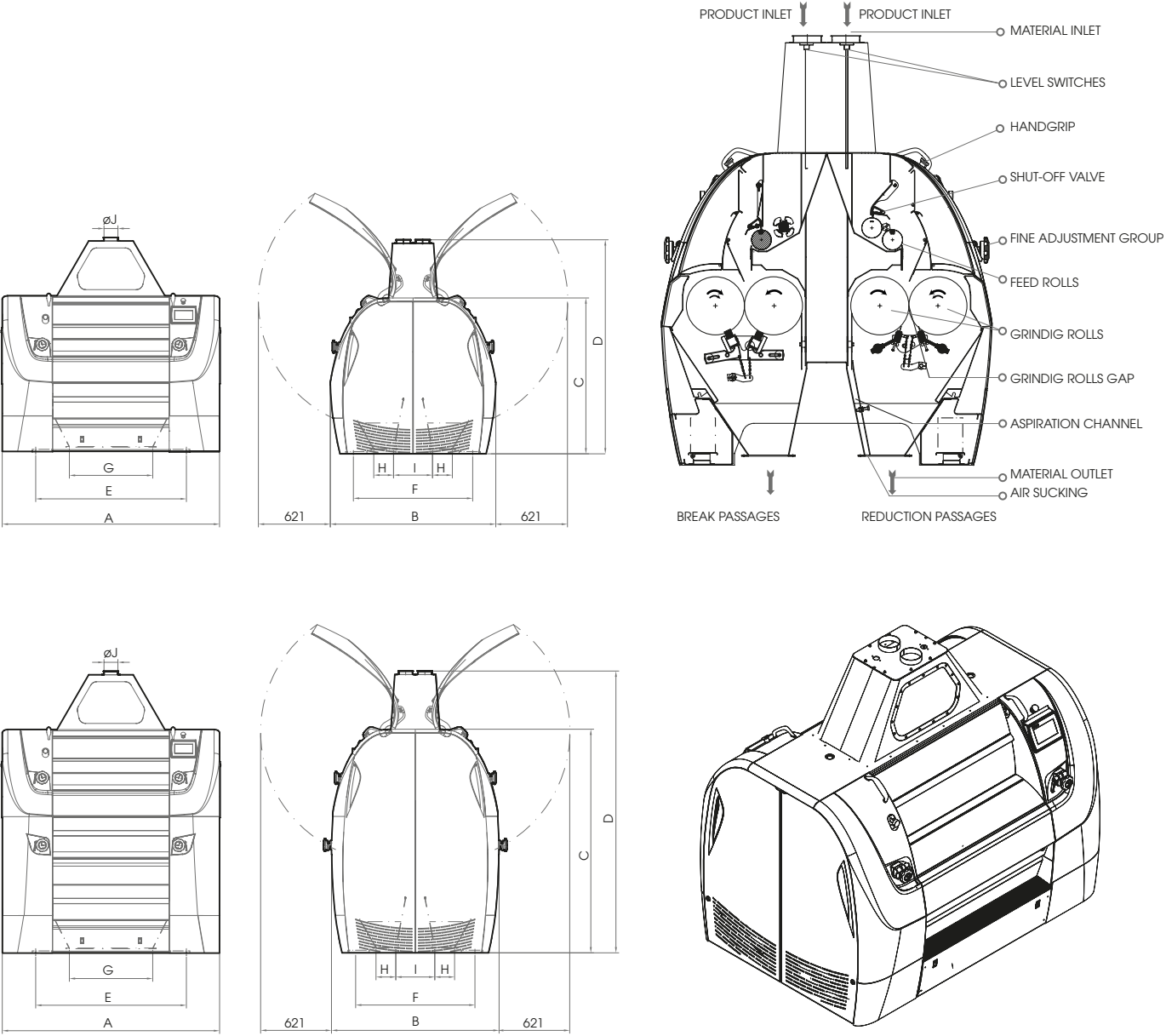
The machine is supplied completely wired.



A close-up photograph of a person's hands cupped together, holding a generous amount of golden wheat grains. The hands are positioned in the center of the frame, with the fingers slightly curled to cradle the grains. The background is a soft-focus field of tall, golden wheat stalks, creating a warm and natural atmosphere. The lighting is bright, highlighting the texture of the grains and the skin of the hands.

Nature's blessing inspires our innovations...

The New Generation **SIMILAGO II**



Standard Accessories

- Lifting hooks
- Discharge hoppers

Optional accessories

- Main drive motor, drive belts and pulleys
- Motor mounting profile beam and fasteners
- Adjustable motor mounting
- Floor mount metal chassis with anchor bolts*
- Roll disassembly & assembly cart*
- All required tools*
- Wrench set*

Optional accessories marked (*) are supplied as standard accessories for complete turnkey projects.

Dimensions [mm]

Model	A	B	C	D	E	F	G	H	I	øJ
DAVS II 4 x ø 250 / 800	1675				1100		525			
DAVS II 4 x ø 250 / 1000	1875	1430	1350	1850	1300		725			
DAVS II 4 x ø 250 / 1250	2125				1550		975			
DAVS II 8 x ø 250 / 800	1675				1100	1030	525	171	336	ø120
DAVS II 8 x ø 250 / 1000	1875	1450	1935	2435	1300		725			ø150
DAVS II 8 x ø 250 / 1250							975			
DAVS II 4 x ø 300 / 1250	2125		1350	1850	1550					
DAVS II 8 x ø 300 / 1250		1430	1935	2435			725	216	245	

Technical Features

Feed Rolls (Kw)	Weights (Kg)		Gross Volume (m³)
	Net	Gross	
0,75	2920	3000	7,4
	3140	3442	8,1
	3380	3709	9,1
	5252	5565	8,8
	5770	6107	9,8
	6550	6916	10,9
	4465	4818	10
	7950	8349	12,5

ALAPALA'S NEW STATE OF THE ART MILLING TECHNOLOGY.

New Generation Similago II provides more energy efficiency and helps to save nature for future.

GA
GRUPPOALAPALA

pusula reklamı



Alapala

"Passion for milling since 1954"

HEADQUARTERS & FACTORY : ORGANİZE SANAYİ BÖLGESİ, 12.CADDE NO:15 PK.54 19040 ÇORUM, TURKEY

T: +90 364 254 95 60 PBX F: +90 364 254 92 90

SALES & MARKETING : DÜNYA TİCARET MERKEZİ, A1 BLOK, NO: 15/453 34149 YEŞİLKÖY İSTANBUL, TURKEY

T: +90 212 465 60 40 PBX F: +90 212 465 60 42

www.alapala.com • www.alapalaworld.com

info@alapala.com